












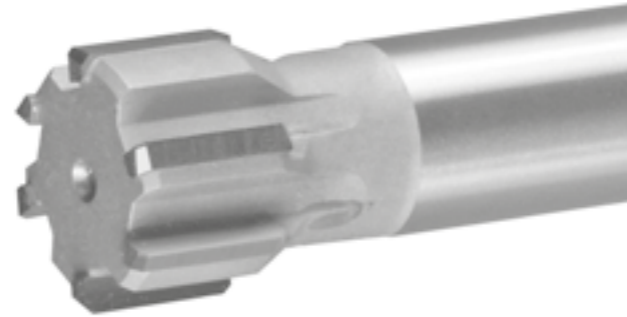
**Inhalt**  
Content  
Contenu

	Seite Page Page				
<b>CircoTec RX</b>	<b>3 - 14</b>				
<b>CircoTec Variopoint</b>	<b>15 - 27</b>				
     	<p><b>Fest-Reibahlen, Zyl.</b> Solid reamers, cyl. Alésoirs fixes, cyl.</p>	<p><b>ohne Kühlung</b> without coolant through sans arrosage</p>	<p>A25N / A45N</p> <p>A27N / A47N</p>	<p>16</p> <p>17</p>	
		<p><b>mit Kühlung</b> with coolant through avec arrosage</p>	<p>C25N / B25N</p> <p>B27N</p> <p>C45N / B45N</p> <p>B47N</p>	<p>18</p> <p>19</p> <p>20</p> <p>21</p>	
	     	<p><b>Nachstell-Reibahlen, Zyl.</b> Expandable reamers, cyl. Alésoirs expansibles, cyl.</p>	<p><b>ohne Kühlung</b> without coolant through sans arrosage</p>	<p>D25N / D45N</p> <p>D27N / D47N</p>	<p>22</p> <p>23</p>
			<p><b>mit Kühlung</b> with coolant through avec arrosage</p>	<p>G25N / F25N</p> <p>F27N</p> <p>G45N / F45N</p> <p>F47N</p>	<p>24</p> <p>25</p> <p>26</p> <p>27</p>
		<b>Zubehör   Accessories   Accessoires</b>	<b>29 - 33</b>		
		<b>Technologie   Technology   Technologie</b>	<b>34 - 49</b>		

**Fest-Reibahlen, Zyl.**  
Solid reamers, cyl.  
Alésoirs fixes, cyl.

Ohne Kühlung  
Without coolant through  
Sans arrosage

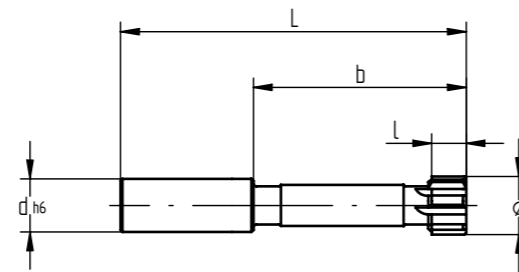
**A25N / A45N**



**A25N**

**Gerade Schneiden**  
Straight fluted inserts  
Outils avec coupe droite

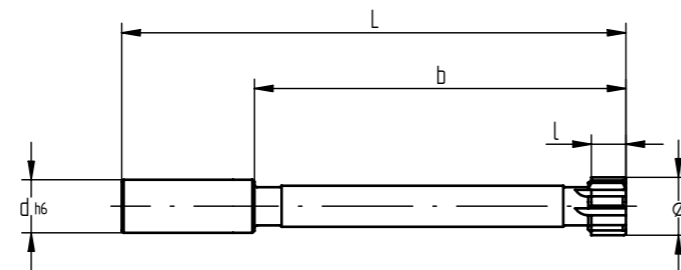
Ø-Bereich mm Ø-range mm Ø-plage mm	L	l	b	dh6	Z
5.80 - 7.60	80	8	40	12	4
7.61 - 8.60	80	10	40	12	4
8.61 - 9.60	90	10	50	12	4
9.61 - 10.60	90	12	50	12	4
10.61 - 14.60	100	12	50	12	6
14.61 - 15.60	100	14	50	12	6
15.61 - 18.60	110	14	50	16	6
18.61 - 21.10	130	14	60	20	6
21.11 - 25.10	130	16	60	20	6
25.11 - 28.10	145	16	75	25	6
28.11 - 33.10	145	18	75	25	6



**A45N**

**Gerade Schneiden**  
Straight fluted inserts  
Outils avec coupe droite

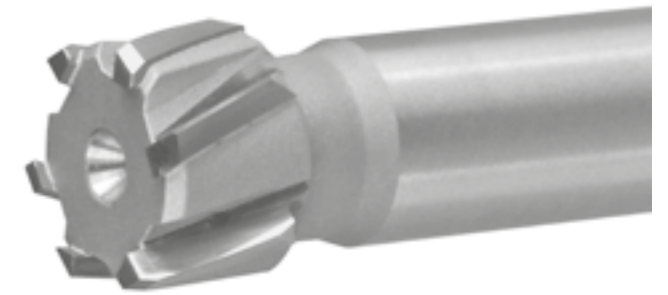
Ø-Bereich mm Ø-range mm Ø-plage mm	L	l	b	dh6	Z
5.80 - 7.60	120	8	80	12	4
7.61 - 8.60	120	10	80	12	4
8.61 - 9.60	130	10	90	12	4
9.61 - 10.60	130	12	90	12	4
10.61 - 14.60	150	12	100	12	6
14.61 - 15.60	150	14	100	12	6
15.61 - 18.60	160	14	100	16	6
18.61 - 21.10	190	14	120	20	6
21.11 - 25.10	190	16	120	20	6
25.11 - 28.10	220	16	150	25	6
28.11 - 33.10	220	18	150	25	6



**Fest-Reibahlen, Zyl.**  
Solid reamers, cyl.  
Alésoirs fixes, cyl.

Ohne Kühlung  
Without coolant through  
Sans arrosage

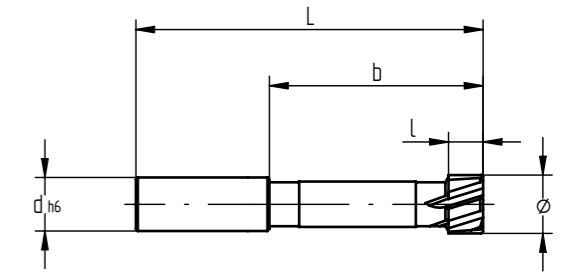
**A27N / A47N**



**A27N**

**Linksschräg verzahnte Schneiden**  
Left helical fluted inserts  
Outils avec coupe diagonale gauche

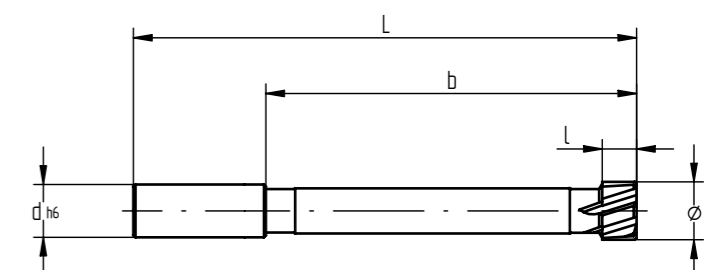
Ø-Bereich mm Ø-range mm Ø-plage mm	L	l	b	dh6	Z
5.80 - 7.60	80	8	40	12	4
7.61 - 8.60	80	10	40	12	4
8.61 - 9.60	90	10	50	12	4
9.61 - 10.60	90	12	50	12	4
10.61 - 14.60	100	12	50	12	6
14.61 - 15.60	100	14	50	12	6
15.61 - 18.60	110	14	50	16	6
18.61 - 21.10	130	14	60	20	6
21.11 - 25.10	130	16	60	20	6
25.11 - 28.10	145	16	75	25	6
28.11 - 33.10	145	18	75	25	6



**A47N**

**Linksschräg verzahnte Schneiden**  
Left helical fluted inserts  
Outils avec coupe diagonale gauche

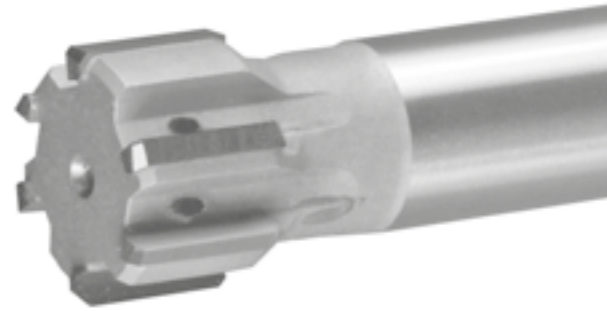
Ø-Bereich mm Ø-range mm Ø-plage mm	L	l	b	dh6	Z
5.80 - 7.60	120	8	80	12	4
7.61 - 8.60	120	10	80	12	4
8.61 - 9.60	130	10	90	12	4
9.61 - 10.60	130	12	90	12	4
10.61 - 14.60	150	12	100	12	6
14.61 - 15.60	150	14	100	12	6
15.61 - 18.60	160	14	100	16	6
18.61 - 21.10	190	14	120	20	6
21.11 - 25.10	190	16	120	20	6
25.11 - 28.10	220	16	150	25	6
28.11 - 33.10	220	18	150	25	6



**Fest-Reibahlen, Zyl.**  
**Solid reamers, cyl.**  
**Alésoirs fixes, cyl.**

Mit Kühlung  
 With coolant through  
 Avec arrosage

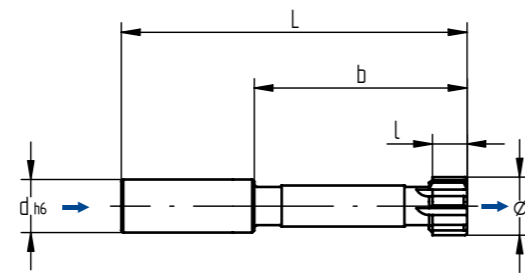
**C25N / B25N**



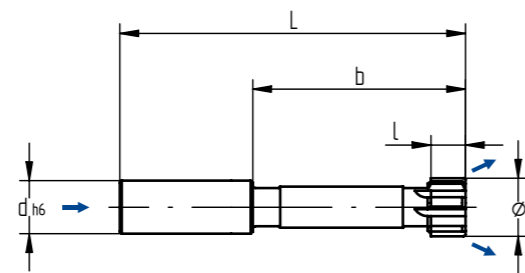
**Gerade Schneiden**  
 Straight fluted inserts  
 Outils avec coupe droite

Ø-Bereich mm Ø-range mm Ø-plage mm	L	l	b	dh6	Z
5.80 - 7.60	80	8	40	12	4
7.61 - 8.60	80	10	40	12	4
8.61 - 9.60	90	10	50	12	4
9.61 - 10.60	90	12	60	12	4
10.61 - 14.60	100	12	60	12	6
14.61 - 15.60	100	14	60	12	6
15.61 - 18.60	110	14	60	16	6
18.61 - 21.10	130	14	70	20	6
21.11 - 25.10	130	16	70	20	6
25.11 - 28.10	145	16	85	25	6
28.11 - 33.10	145	18	85	25	6

**C25N**



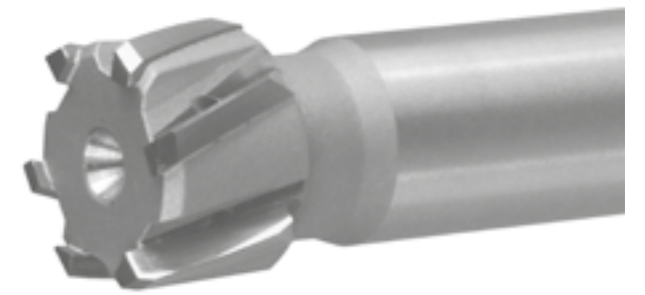
**B25N**



**Fest-Reibahlen, Zyl.**  
**Solid reamers, cyl.**  
**Alésoirs fixes, cyl.**

Mit Kühlung  
 With coolant through  
 Avec arrosage

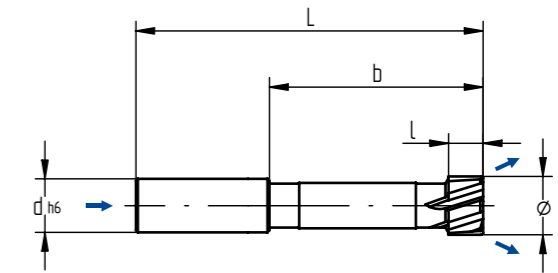
**B27N**



**Linksschräg verzahnte Schneiden**  
 Left helical fluted inserts  
 Outils avec coupe diagonale gauche

Ø-Bereich mm Ø-range mm Ø-plage mm	L	l	b	dh6	Z
5.80 - 7.60	80	8	40	12	4
7.61 - 8.60	80	10	40	12	4
8.61 - 9.60	90	10	50	12	4
9.61 - 10.60	90	12	60	12	4
10.61 - 14.60	100	12	60	12	6
14.61 - 15.60	100	14	60	12	6
15.61 - 18.60	110	14	60	16	6
18.61 - 21.10	130	14	70	20	6
21.11 - 25.10	130	16	70	20	6
25.11 - 28.10	145	16	85	25	6
28.11 - 33.10	145	18	85	25	6

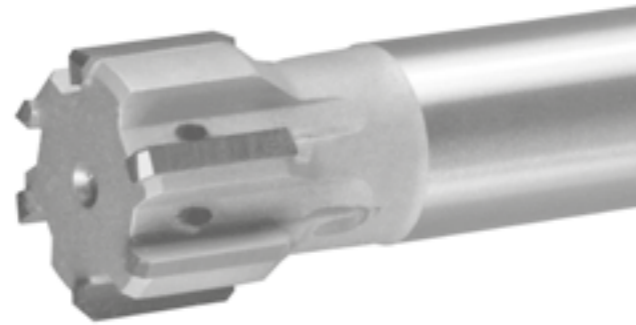
**B27N**



**Fest-Reibahlen, Zyl.**  
Solid reamers, cyl.  
Alésoirs fixes, cyl.

Mit Kühlung  
With coolant through  
Avec arrosage

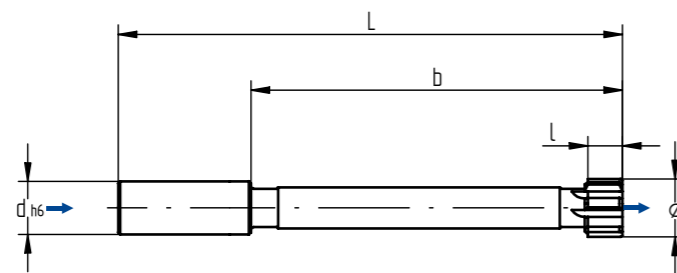
**C45N / B45N**



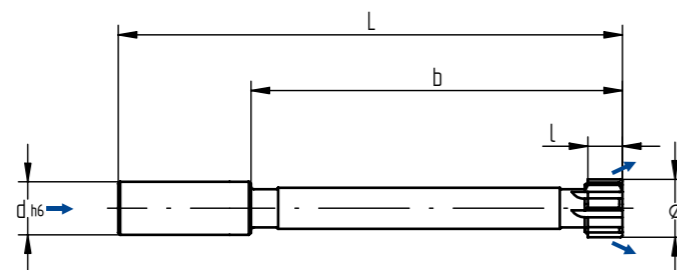
**Gerade Schneiden**  
Straight fluted inserts  
Outils avec coupe droite

Ø-Bereich mm Ø-range mm Ø-plage mm	L	l	b	dh <sub>6</sub>	Z
5.80 - 7.60	120	8	80	12	4
7.61 - 8.60	120	10	80	12	4
8.61 - 9.60	130	10	90	12	4
9.61 - 10.60	130	12	90	12	4
10.61 - 14.60	150	12	110	12	6
14.61 - 15.60	150	14	110	12	6
15.61 - 18.60	160	14	110	16	6
18.61 - 21.10	190	14	130	20	6
21.11 - 25.10	190	16	130	20	6
25.11 - 28.10	220	16	160	25	6
28.11 - 33.10	220	18	160	25	6

**C45N**



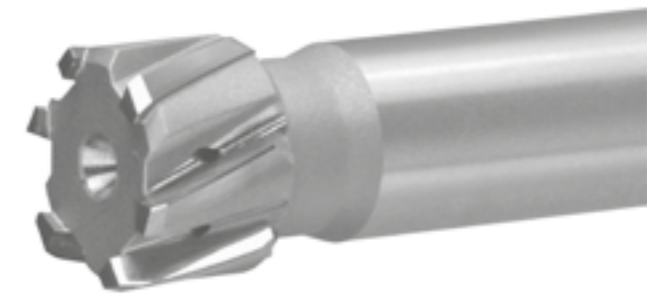
**B45N**



**Fest-Reibahlen, Zyl.**  
Solid reamers, cyl.  
Alésoirs fixes, cyl.

Mit Kühlung  
With coolant through  
Avec arrosage

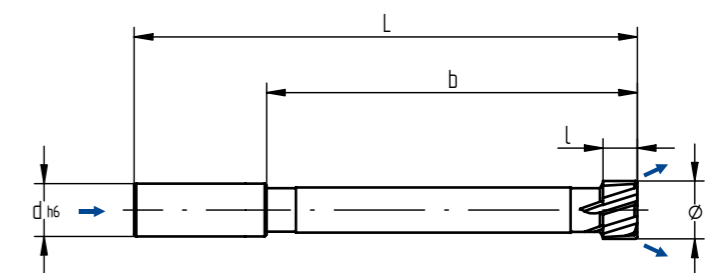
**B47N**



**Linksschräg verzahnte Schneiden**  
Left helical fluted inserts  
Outils avec coupe diagonale gauche

Ø-Bereich mm Ø-range mm Ø-plage mm	L	l	b	dh <sub>6</sub>	Z
5.80 - 7.60	120	8	80	12	4
7.61 - 8.60	120	10	80	12	4
8.61 - 9.60	130	10	90	12	4
9.61 - 10.60	130	12	90	12	4
10.61 - 14.60	150	12	110	12	6
14.61 - 15.60	150	14	110	12	6
15.61 - 18.60	160	14	110	16	6
18.61 - 21.10	190	14	130	20	6
21.11 - 25.10	190	16	130	20	6
25.11 - 28.10	220	16	160	25	6
28.11 - 33.10	220	18	160	25	6

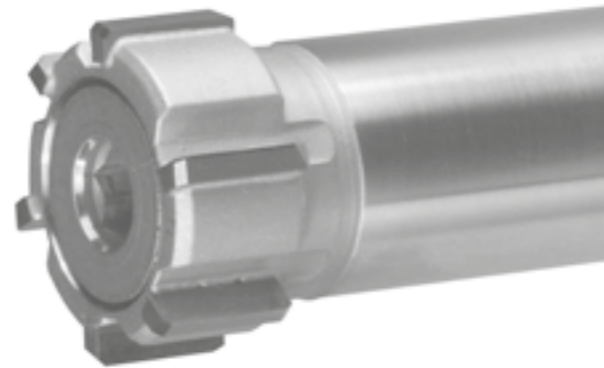
**B47N**



**Nachstell-Reibahlen, Zyl.**  
Expandable reamers, cyl.  
Alésoirs expansibles, cyl.

Ohne Kühlung  
Without coolant through  
Sans arrosage

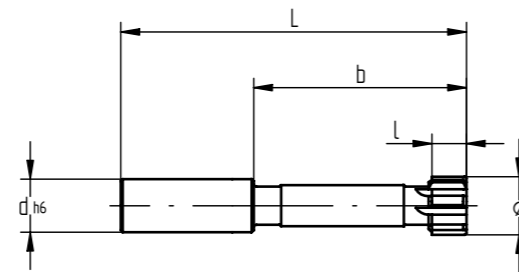
**D25N / D45N**



**D25N**

**Gerade Schneiden**  
Straight fluted inserts  
Outils avec coupe droite

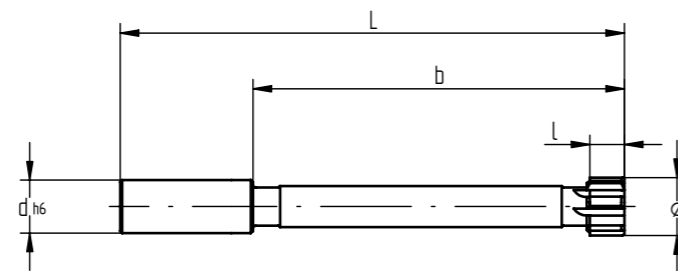
Ø-Bereich mm Ø-range mm Ø-plage mm	L	l	b	dh6	Z
5.80 - 7.60	80	8	40	12	4
7.61 - 8.60	80	10	40	12	4
8.61 - 9.60	90	10	50	12	4
9.61 - 10.60	90	12	50	12	4
10.61 - 14.60	100	12	50	12	6
14.61 - 15.60	100	14	50	12	6
15.61 - 18.60	110	14	50	16	6
18.61 - 21.10	130	14	60	20	6
21.11 - 25.10	130	16	60	20	6
25.11 - 28.10	145	16	75	25	6
28.11 - 33.10	145	18	75	25	6



**D45N**

**Gerade Schneiden**  
Straight fluted inserts  
Outils avec coupe droite

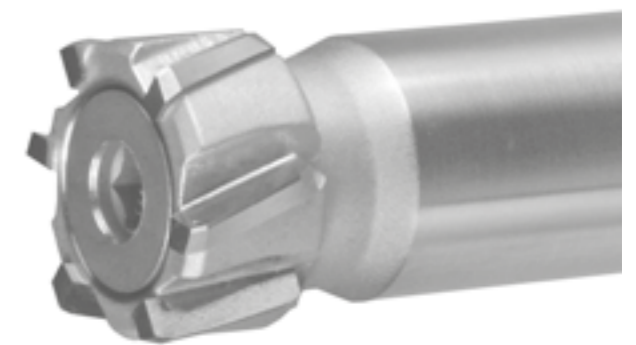
Ø-Bereich mm Ø-range mm Ø-plage mm	L	l	b	dh6	Z
5.80 - 7.60	120	8	80	12	4
7.61 - 8.60	120	10	80	12	4
8.61 - 9.60	130	10	90	12	4
9.61 - 10.60	130	12	90	12	4
10.61 - 14.60	150	12	100	12	6
14.61 - 15.60	150	14	100	12	6
15.61 - 18.60	160	14	100	16	6
18.61 - 21.10	190	14	120	20	6
21.11 - 25.10	190	16	120	20	6
25.11 - 28.10	220	16	150	25	6
28.11 - 33.10	220	18	150	25	6



**Nachstell-Reibahlen, Zyl.**  
Expandable reamers, cyl.  
Alésoirs expansibles, cyl.

Ohne Kühlung  
Without coolant through  
Sans arrosage

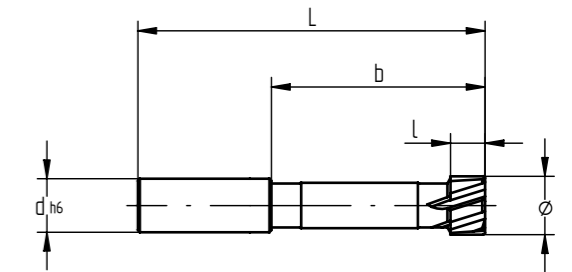
**D27N / D47N**



**D27N**

**Linksschräg verzahnte Schneiden**  
Left helical fluted inserts  
Outils avec coupe diagonale gauche

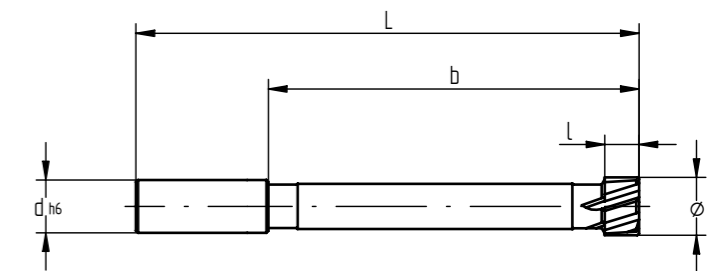
Ø-Bereich mm Ø-range mm Ø-plage mm	L	l	b	dh6	Z
5.80 - 7.60	80	8	40	12	4
7.61 - 8.60	80	10	40	12	4
8.61 - 9.60	90	10	50	12	4
9.61 - 10.60	90	12	50	12	4
10.61 - 14.60	100	12	50	12	6
14.61 - 15.60	100	14	50	12	6
15.61 - 18.60	110	14	50	16	6
18.61 - 21.10	130	14	60	20	6
21.11 - 25.10	130	16	60	20	6
25.11 - 28.10	145	16	75	25	6
28.11 - 33.10	145	18	75	25	6



**D47N**

**Linksschräg verzahnte Schneiden**  
Left helical fluted inserts  
Outils avec coupe diagonale gauche

Ø-Bereich mm Ø-range mm Ø-plage mm	L	l	b	dh6	Z
5.80 - 7.60	120	8	80	12	4
7.61 - 8.60	120	10	80	12	4
8.61 - 9.60	130	10	90	12	4
9.61 - 10.60	130	12	90	12	4
10.61 - 14.60	150	12	100	12	6
14.61 - 15.60	150	14	100	12	6
15.61 - 18.60	160	14	100	16	6
18.61 - 21.10	190	14	120	20	6
21.11 - 25.10	190	16	120	20	6
25.11 - 28.10	220	16	150	25	6
28.11 - 33.10	220	18	150	25	6



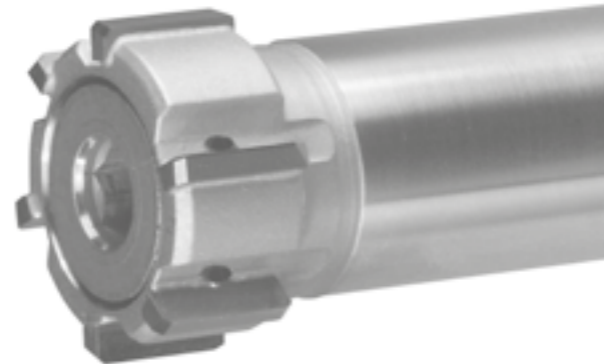
**Nachstell-Reibahlen, Zyl.**  
Expandable reamers, cyl.  
Alésoirs expansibles, cyl.

Mit Kühlung  
With coolant through  
Avec arrosage

**Gerade Schneiden**  
Straight fluted inserts  
Outils avec coupe droite

Ø-Bereich mm Ø-range mm Ø-plage mm	L	l	b	d <sub>h6</sub>	Z
5.80 - 7.60	80	8	40	12	4
7.61 - 8.60	80	10	40	12	4
8.61 - 9.60	90	10	50	12	4
9.61 - 10.60	90	12	60	12	4
10.61 - 14.60	100	12	60	12	6
14.61 - 15.60	100	14	60	12	6
15.61 - 18.60	110	14	60	16	6
18.61 - 21.10	130	14	70	20	6
21.11 - 25.10	130	16	70	20	6
25.11 - 28.10	145	16	85	25	6
28.11 - 33.10	145	18	85	25	6

**G25N / F25N**



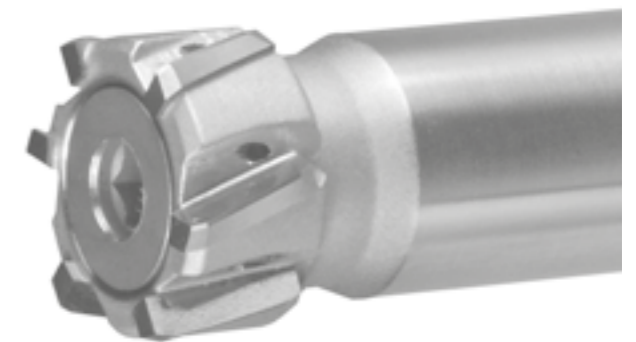
**Nachstell-Reibahlen, Zyl.**  
Expandable reamers, cyl.  
Alésoirs expansibles, cyl.

Mit Kühlung  
With coolant through  
Avec arrosage

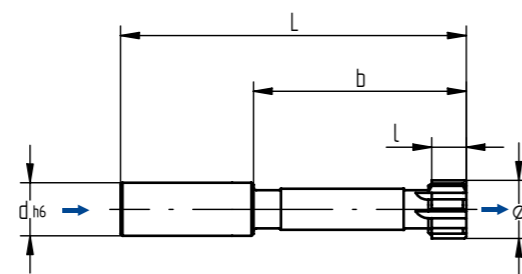
**Linksschräg verzahnte Schneiden**  
Left helical fluted inserts  
Outils avec coupe diagonale gauche

Ø-Bereich mm Ø-range mm Ø-plage mm	L	l	b	d <sub>h6</sub>	Z
5.80 - 7.60	80	8	40	12	4
7.61 - 8.60	80	10	40	12	4
8.61 - 9.60	90	10	50	12	4
9.61 - 10.60	90	12	60	12	4
10.61 - 14.60	100	12	60	12	6
14.61 - 15.60	100	14	60	12	6
15.61 - 18.60	110	14	60	16	6
18.61 - 21.10	130	14	70	20	6
21.11 - 25.10	130	16	70	20	6
25.11 - 28.10	145	16	85	25	6
28.11 - 33.10	145	18	85	25	6

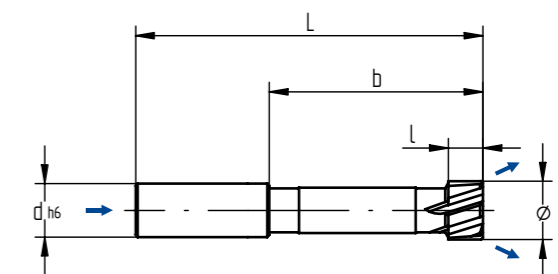
**F27N**



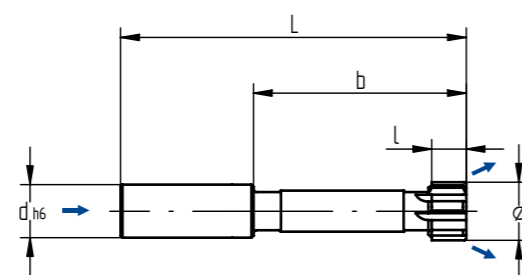
**G25N**



**F27N**



**F25N**



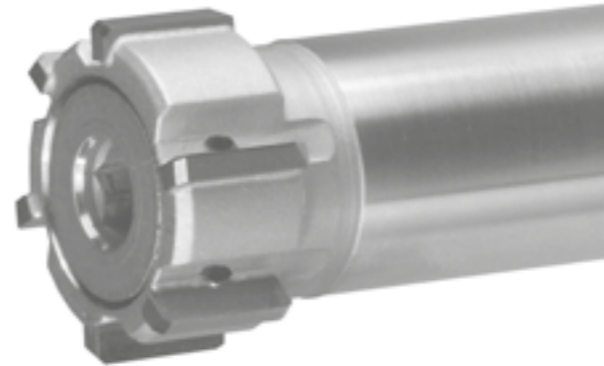
**Nachstell-Reibahlen, Zyl.**  
Expandable reamers, cyl.  
Alésoirs expansibles, cyl.

Mit Kühlung  
With coolant through  
Avec arrosage

**Gerade Schneiden**  
Straight fluted inserts  
Outils avec coupe droite

Ø-Bereich mm Ø-range mm Ø-plage mm	L	l	b	dh <sub>6</sub>	Z
5.80 - 7.60	120	8	80	12	4
7.61 - 8.60	120	10	80	12	4
8.61 - 9.60	130	10	90	12	4
9.61 - 10.60	130	12	90	12	4
10.61 - 14.60	150	12	110	12	6
14.61 - 15.60	150	14	110	12	6
15.61 - 18.60	160	14	110	16	6
18.61 - 21.10	190	14	130	20	6
21.11 - 25.10	190	16	130	20	6
25.11 - 28.10	220	16	160	25	6
28.11 - 33.10	220	18	160	25	6

**G45N / F45N**



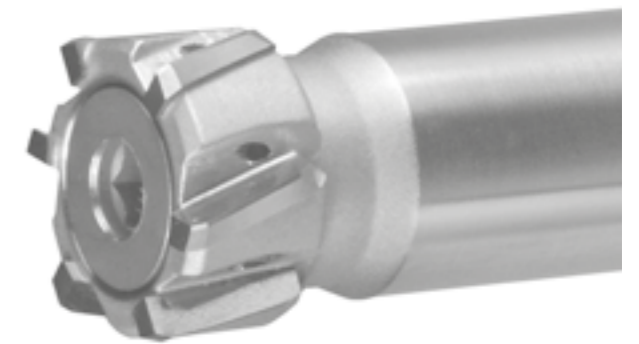
**Nachstell-Reibahlen, Zyl.**  
Expandable reamers, cyl.  
Alésoirs expansibles, cyl.

Mit Kühlung  
With coolant through  
Avec arrosage

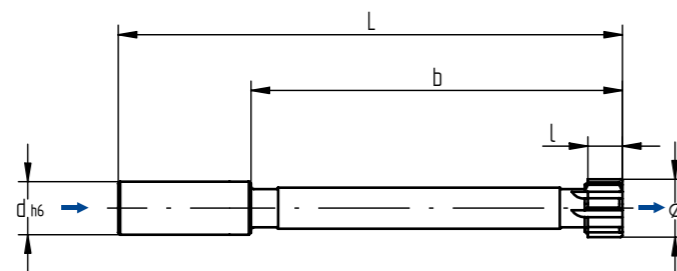
**Linksschräg verzahnte Schneiden**  
Left helical fluted inserts  
Outils avec coupe diagonale gauche

Ø-Bereich mm Ø-range mm Ø-plage mm	L	l	b	dh <sub>6</sub>	Z
5.80 - 7.60	120	8	80	12	4
7.61 - 8.60	120	10	80	12	4
8.61 - 9.60	130	10	90	12	4
9.61 - 10.60	130	12	90	12	4
10.61 - 14.60	150	12	110	12	6
14.61 - 15.60	150	14	110	12	6
15.61 - 18.60	160	14	110	16	6
18.61 - 21.10	190	14	130	20	6
21.11 - 25.10	190	16	130	20	6
25.11 - 28.10	220	16	160	25	6
28.11 - 33.10	220	18	160	25	6

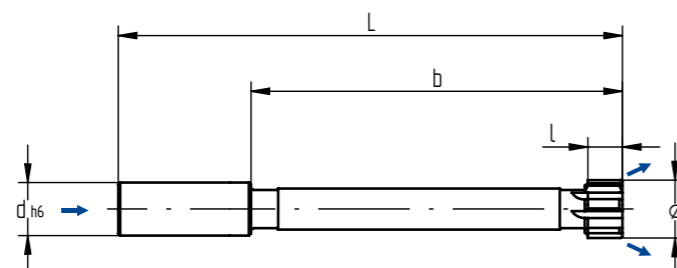
**F47N**



**G45N**



**F45N**



**F47N**

